

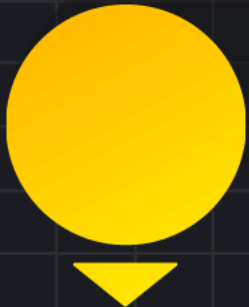
Iluminação personagem

CG II



Three-Point Lighting

Backlight



Fill Light



Key Light



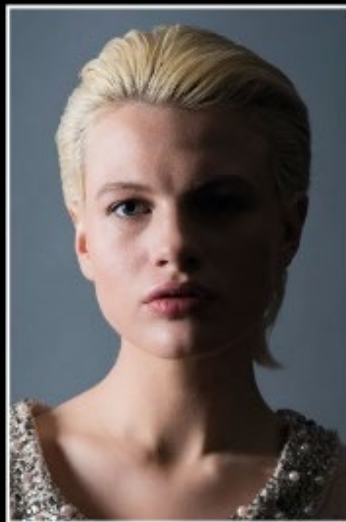
Camera

SPLIT



KIT: One strobe, one lightstand, one 20-inch softbox

Position a light to one side of the model in such a way that no light spills onto the other side of the face, with a shadow line running down the centre. We've used a softbox here, but any of the modifiers will work.



REMBRANDT WITH A SOFTBOX



KIT: One strobe, one lightstand, one 20-inch softbox

Position the light high and to the side to create a triangle on the model's cheek. The shadow of the nose should point towards the edge of the lips. The softbox creates a soft directional effect.



LOOP



KIT: One strobe, one lightstand, one 20-inch softbox

This set-up is similar to Rembrandt, but rather than creating a closed triangle of light on the unlit cheek, the shadow from the nose should create a loop pointing towards the corner of the mouth.



KEY, FILL AND HAIR LIGHT



KIT: Three strobes, three lightstands, two 20-inch softboxes, one honeycomb grid attachment

Start with a Key and Fill set-up. Add a third hair light above and behind the subject. Attach a honeycomb grid to narrow the light beam.

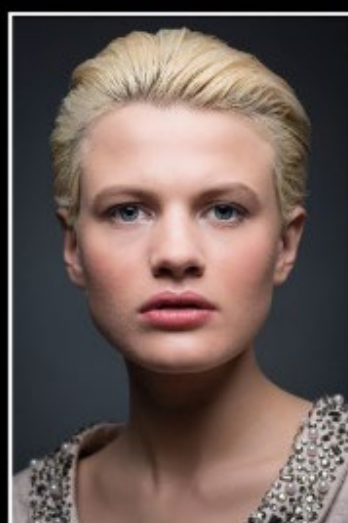


BUTTERFLY



KIT: One strobe, one lightstand, one 20-inch softbox

Position one light above and directly in line with the centre of the subject's face. Notice how there's an even shadow under the nose. It's best if this shadow doesn't reach all the way down to the upper lip.

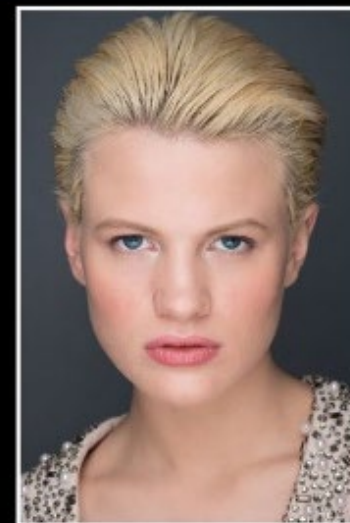


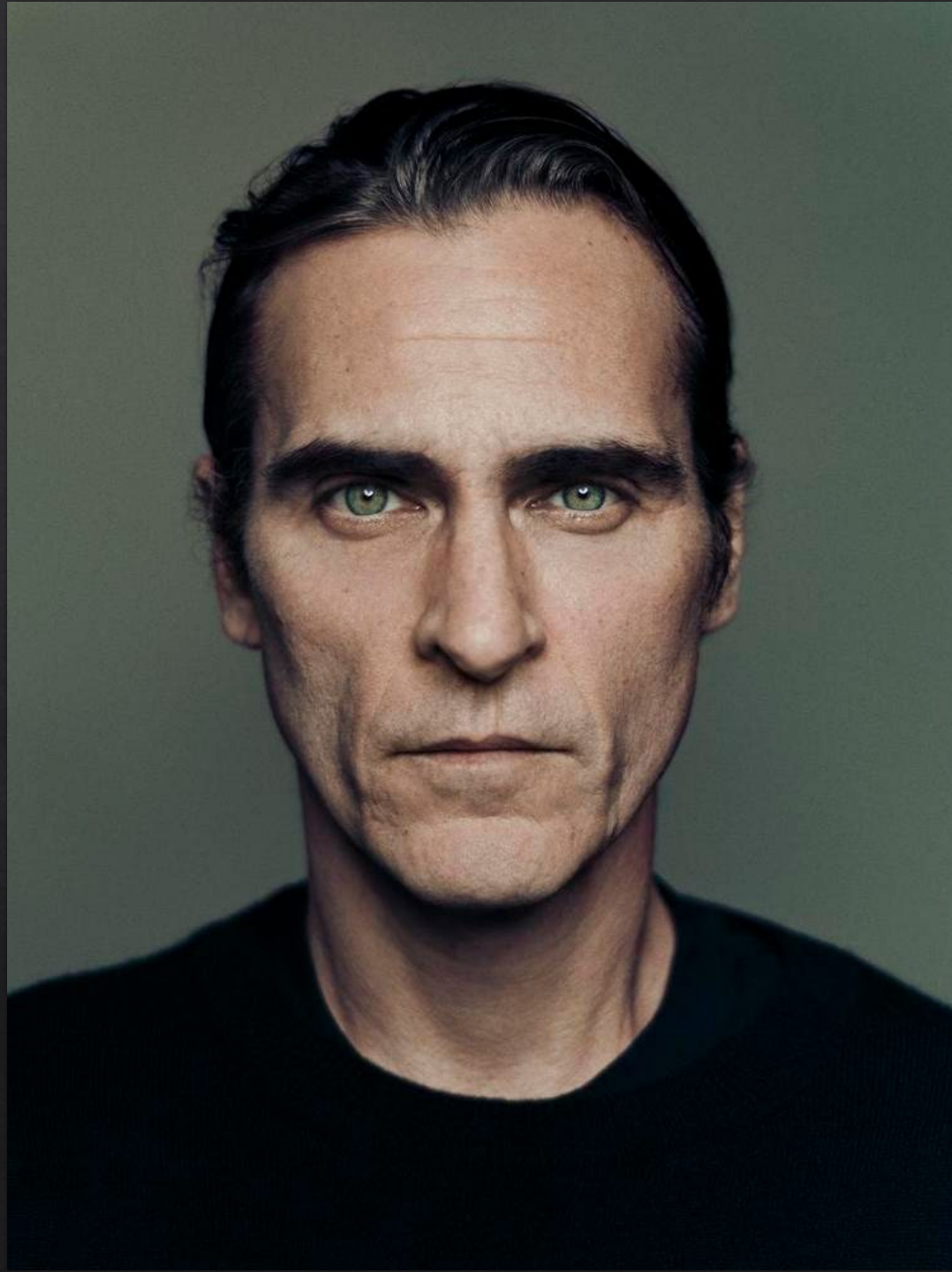
CLAMSHELL



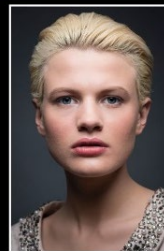
KIT: Two strobes, two lightstands, two 20-inch softboxes

This is a great beauty set-up. Position one softbox above the model in the centre, and one below, also in the centre. A boom arm to support the above light directly above the model is useful, but it isn't vital.





BUTTERFLY

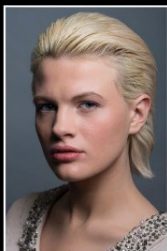


KIT: One strobe, one lightstand, one 20-inch softbox

Position one light above and directly in line with the centre of the subject's face. Notice how there's an even shadow under the nose. It's best if this shadow doesn't reach all the way down to the upper lip.



REMBRANDT BROAD



KIT: One strobe, one lightstand, one 20-inch softbox

Use the principles of Rembrandt lighting to create the triangle of light on the face. Position the model's head at an angle, and light it from the opposite side, so the side of the face closer to the camera is lit.



SPLIT WITH FILL



KIT: One strobe, one lightstand, one 20-inch softbox

Position a light to one side of the model in such a way that no light spills onto the other side of the face, with a shadow line running down the centre. Position a reflector on the opposite side to fill in the shadows.



KEY, FILL AND HAIR LIGHT



KIT: Three strobes, three lightstands, two 20-inch softboxes, one honeycomb grid attachment

Start with a Key and Fill set-up. Add a third hair light above and behind the subject. Attach a honeycomb grid to narrow the light beam.



COLOURED GELS



KIT: Four strobes, four lightstands, one 20-inch softbox, three strobes with reflectors, three sheets of gel, one silver reflector
A softbox with a red gel creates a glow from the right. A strobe with a blue gel lights the background. A strobe with a purple gel adds an accent.









